

092/092M/21 高性能(通用,医疗)型双极滤波器

High Performance Double Stage General Purpose and Medical Type Filters



092/21 Series 系列

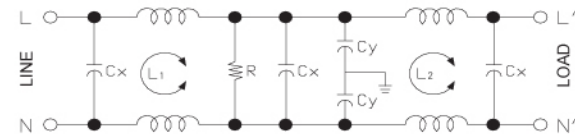
High Performance Double Stage Single Phase Filters
高性能单相双极滤波器

Features 特点

High performance, wide range double stage power line filters.
高性能, 范围广双极电源滤波器

Typical Applications 应用范围

White goods with frequency inverters, inverter based control systems.
带变频器的白色家电, 控制系统上的变频器用



092/21 - Electrical Schematic 电路图

092M/21 Series 系列

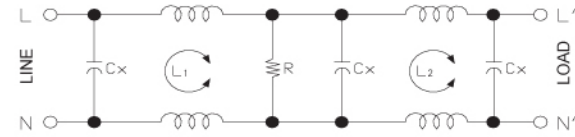
Low Leakage Current Medical Type High Performance Double Stage Single Phase Filters
低漏电流, 医疗型高性能单相双极滤波器

Features 特点

Low leakage current, high performance, wide range double stage power line filters.
低漏电流, 高性能, 范围广双极电源滤波器

Typical Applications 应用范围

Medical equipment, white goods under safety requirements and frequency inverter based controls and equipment.
医疗设备, 有安全要求的白色家电, 带变频器的控制系统和设备



092M/21 - Electrical Schematic 电路图

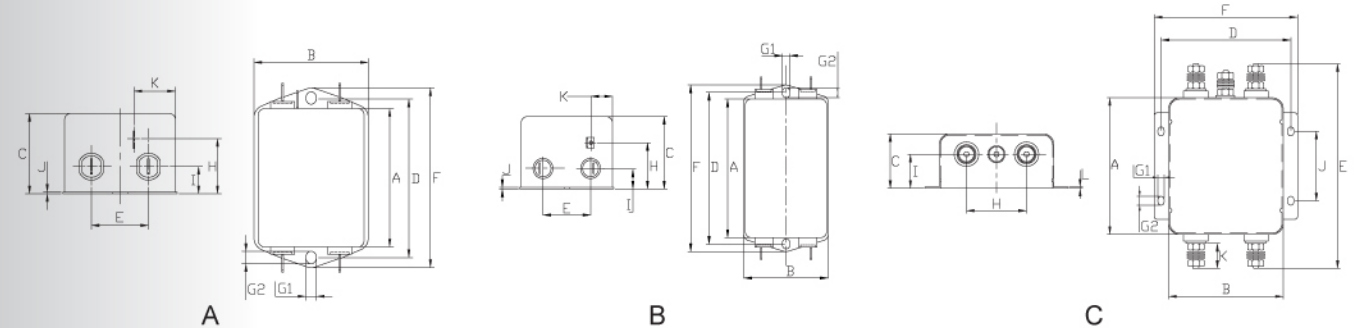
Technical Data 技术参数

Rated Voltage Max. (V) 最高额定电压:	250VAC	Leakage Current 092/21 Series 092/21系列 漏电流
Rated Current (A) 额定电流:	1 - 30A @ 40°C	@ 250 VAC 50Hz: 0.89 mA Max.
Operating Frequency (Hz) 工作频率:	50 / 60Hz	@ 115 VAC 60Hz: 0.49 mA Max.
Hiprot Rating 高压等级		Leakage Current 092M/21 Series 092M/21系列 漏电流
(Line to Line线对线):	1450V DC	@ 250 VAC 50Hz: 10µA Max.
(Line to Ground线对地):	2250V DC	@ 115 VAC 60Hz: 5µA Max.
Case 外壳:	Plated steel	IP Standard IP 标准:
Packaging Quantity 包装数量:	60 / 45 pcs per carton	65
		Climatic category 气候类别:
		25 / 85 / 21

092/21 Model No. 型号	092M/21 Model No. 型号	Rated Current @ 40°C 额定电流	Mechanical Diagram 外形图	Unit Weight 单重 (g)	Terminal Options 连接方式	
					In 入	Out 出
092.00121.00	092M.00121.00	1 A	A	152	Faston 6.35*0.8 / M4	Faston 6.35*0.8 / M4
092.00321.00	092M.00321.00	3 A	A	152	Faston 6.35*0.8 / M4	Faston 6.35*0.8 / M4
092.00721.00	092M.00721.00	7 A	A	152	Faston 6.35*0.8 / M4	Faston 6.35*0.8 / M4
092.01021.00	092M.01021.00	10 A	A	215	Faston 6.35*0.8 / M4	Faston 6.35*0.8 / M4
092.01521.00	092M.01521.00	15 A	A	225	Faston 6.35*0.8 / M4	Faston 6.35*0.8 / M4
092.02021.00	092M.02021.00	20 A	B	335	Faston 6.35*0.8 / M4	Faston 6.35*0.8 / M4
092.03021.00	092M.03021.00	30 A	C	850	M4 / M6	M4 / M6

Please mark terminals type at the end of the P/N when order or inquiry
请在订单或询价单上注明端子类型

092/092M/21 Mechanical Outlines 外形图



092/092M/21 Mechanical Dimensions (mm) 外形尺寸

所有单位为mm, 1 inch=25.4 mm (All dimensions in mm)

Model No.	Model No.	A	B	C	D	E	F	G	H	I	J	K
092.00121.00	092M.00121.00	51.7	47.5	30.3	62	21	71	5.3*6.3	19.3	12.3	0.6	20.1
092.00321.00	092M.00321.00	51.7	47.5	30.3	62	21	71	5.3*6.3	19.3	12.3	0.6	20.1
092.00721.00	092M.00721.00	51.7	47.5	30.3	62	21	71	5.3*6.3	19.3	12.3	0.6	20.1
092.01021.00	092M.01021.00	65.5	55	30	75	27	85	5.3*6.3	19.5	12.3	0.6	21.5
092.01521.00	092M.01521.00	63.2	52	38	75	25	85	2*4.8	27.5	12.3	0.6	13.5
092.02021.00	092M.02021.00	92.5	58	41	105	30	115	5*6.8	29	13	0.8	13.5
092.03021.00	092M.03021.00	100	84	57	95	150.6	105	4.5*6.5	44	37	50.8	20.5

For reference purpose only 仅供参考

Insertion Loss in dB measured in a 50Ω system 50 Ω环境下插入损耗

092/21 Common Mode 共模									092M/21 Common Mode 共模								
Model No.	Frequency in MHz								Model No.	Frequency in MHz							
	0.05	0.1	0.15	0.5	1	5	10	30		0.05	0.1	0.15	0.5	1	5	10	30
092.00121.00	45	70	80	80	80	80	78	65	092M.00121.00	45	50	60	60	70	65	60	55
092.00321.00	25	50	55	80	76	60	55	45	092M.00321.00	25	40	50	50	60	55	50	45
092.00721.00	12	25	45	70	80	66	60	60	092M.00721.00	12	20	40	40	60	55	45	40
092.01021.00	10	10	30	65	79	72	66	57	092M.01021.00	10	10	20	40	60	55	50	45
092.01521.00	5	10	20	55	70	80	80	70	092M.01521.00	5	10	20	40	60	58	50	45
092.02021.00	5	10	20	55	70	65	80	62	092M.02021.00	5	10	20	40	50	45	42	40
092.03021.00	5	10	20	55	70	65	80	43	092M.03021.00	5	10	20	40	50	50	45	40

092/21 Differential Mode 差模									092M/21 Differential Mode 差模								
Model No.	Frequency in MHz								Model No.	Frequency in MHz							
	0.05	0.1	0.15	0.5	1	5	10	30		0.05	0.1	0.15	0.5	1	5	10	30
092.00121.00	10	15	20	70	50	65	70	60	092M.00121.00	10	15	20	70	50	65	70	60
092.00321.00	10	15	20	70	50	65	70	60	092M.00321.00	10	15	20	70	50	65	70	60
092.00721.00	10	15	20	70	50	65	70	60	092M.00721.00	10	15	20	70	50	65	70	60
092.01021.00	15	20	23	45	60	55	55	60	092M.01021.00	15	20	23	45	60	55	55	60
092.01521.00	15	20	23	45	50	65	55	60	092M.01521.00	15	20	23	45	50	65	55	60
092.02021.00	20	25	30	60	65	70	72	60	092M.02021.00	20	25	30	60	65	70	72	60
092.03021.00	20	25	30	50	65	70	75	60	092M.03021.00	20	25	30	50	65	70	75	60

其它规格可以根据您的要求定做。

Other specifications, requirements and customizations can be offered upon request.

天成达(昆山)电子有限公司 江苏省昆山市横长泾路601号
LCR Electronics (Kunshan) Co., Ltd. No.601 Hengchangjing Rd., Kunshan, Jiangsu, China
Tel: +86-512-57628978 (业务直线) +86-512-57627770/3 E-mail: sales@lcr-china.com
E&OE Specifications and data may change at LCR sole discretion without further notice.

