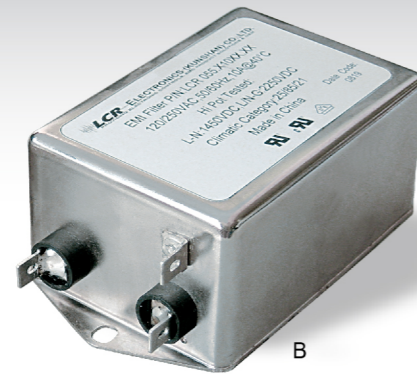
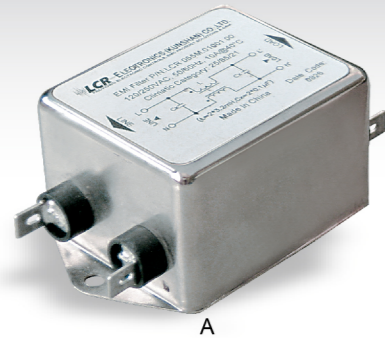


# LCR 055 / 055M

High Differential Mode Performance EMI Filters  
高差模性能电源滤波器



## LCR 055 Series/系列

- Features/特点**  
High performance double stage filter for general purpose, outstanding differential mode performance.  
高性能通用型双极滤波器, 差模性能卓越
- Typical Applications/应用范围**  
Industrial, power supply and controls.  
工业设备, 供电系统和控制系统

### Technical Data/技术参数

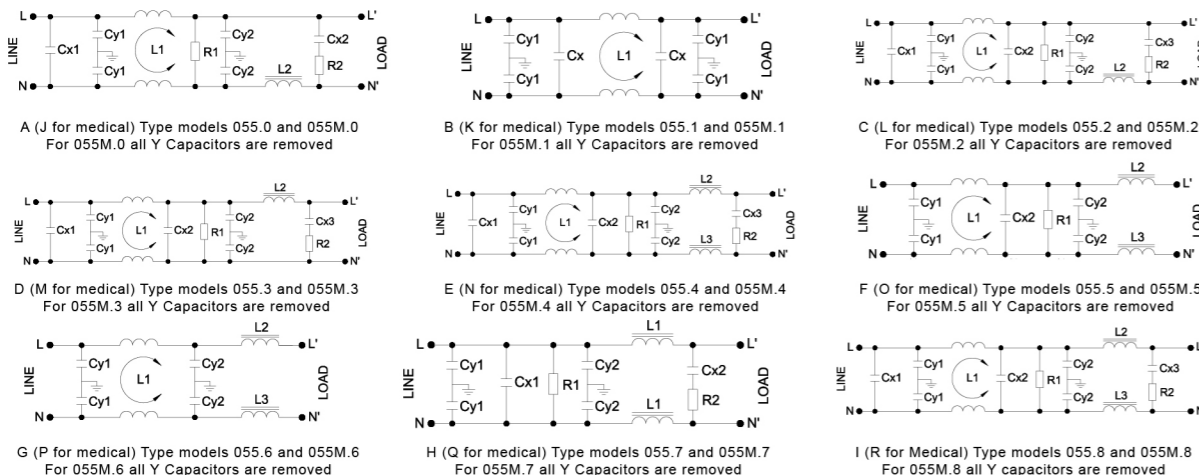
Rated Voltage Max. (V) 最高额定电压	250VAC	Leakage Current 055 Series 055系列 漏电流	
Rated Current (A) 额定电流	3 - 20A @ 40°C	@250 VAC 50Hz	0.89 mA Max.
Operating Frequency (Hz) 工作频率	50 / 60Hz	@115 VAC 60Hz	0.49 mA Max.
Hipot Rating 高压等级		Leakage Current 055M Series 055M系列 漏电流	
(Line to Line 线对线)	1450V DC	@250 VAC 50Hz	10µA Max.
(Line to Ground 线对地)	2250V DC	@115 VAC 60Hz	5µA Max.
Case 外壳	Plated Steel	IP Class 防尘防水等级	IP65
Packaging Quantity 包装数量	45 Pcs per carton	Climatic category 气候类别 (EN60068-1)	25 / 85 / 21

## LCR 055M Series/系列

- Features/特点**  
Low leakage current high performance double stage filter for medical type, outstanding differential mode performance.  
高性能低漏电流, 医疗型双极滤波器, 差模性能卓越
- Typical Applications/应用范围**  
Medical equipment.  
高性能医疗设备

### Available Schematics and Circuits

Circuit I (R for Medical) represent the highest performance module and circuit of the 055 series by model No. 055(M).8xxxx.xx



Ordering Code 055 (M). A BB CC.DD

	A Options	Schematic	A Options	Schematic	A Options	Schematic	
M	Medical Type where all Y capacitors are removed	0	A (J for Medical)	3	D (M for Medical)	6	G (P for Medical)
A	Circuit schematics according to the available options below	1	B (K for Medical)	4	E (N for Medical)	7	H (Q for Medical)
B	Rated Current	2	C (L for Medical)	5	F (O for Medical)	8	I (R for Medical)
C	Internal Values options						
D	External Marking						

Model No. 型号	Model No. 型号	Rated Current @ 40°C 额定电流	Circuit Diagram 电路图	Unit Weight 单重 (g)	Terminal Options 连接方式	
					In 入	Out 出
055.80301.00	055M.80301.00	3 A	I / R	300	Faston 6.35*0.8	
055.80601.00	055M.80601.00	6 A	I / R	400	Faston 6.35*0.8	
055.81011.00	055M.81011.00	10 A	I / R	500	Faston 6.35*0.8	
055.82001.00	055M.82001.00	20 A	I / R	520	Faston 6.35*0.8	

### LCR 055/055M Mechanical Outlines/外形图



### LCR 055/055M-L Mechanical Dimensions (mm)/外形尺寸

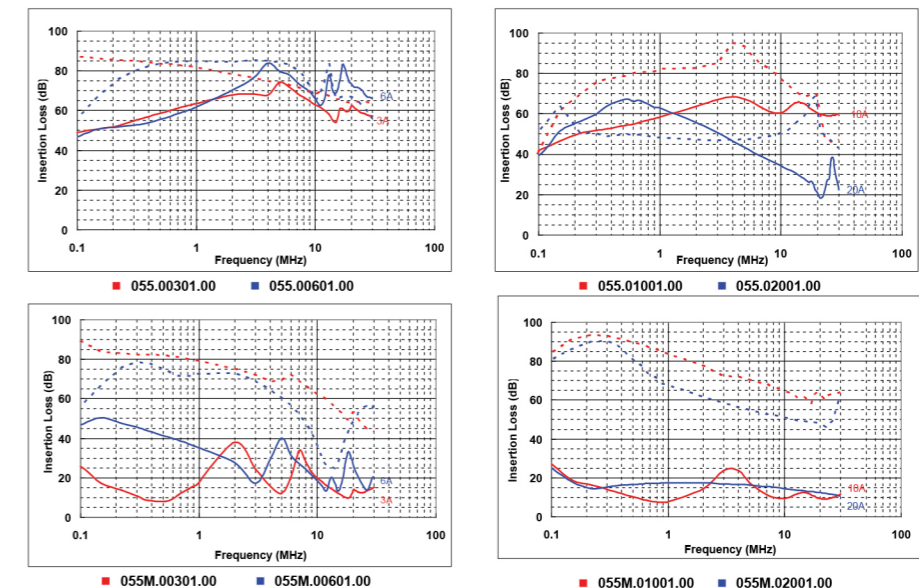
Model No.	Model No.	A	B	C	D	E	F	G	H	I	J	K
055.80301.00	055M.80301.00	92.5	58.0	41.0	105.0	30.0	115.0	5*6.8	33.0	13.0	0.8	13.5
055.80601.00	055M.80601.00	92.5	58.0	41.0	105.0	30.0	115.0	5*6.8	33.0	13.0	0.8	13.5
055.81011.00	055M.81011.00	92.5	58.0	41.0	105.0	30.0	115.0	5*6.8	33.0	13.0	0.8	13.5
055.82001.00	055M.82001.00	92.5	58.0	41.0	105.0	30.0	115.0	5*6.8	33.0	13.0	0.8	13.5

所有单位为mm, 1 inch=25.4 mm (All dimensions in mm)

For reference purpose only 仅供参考

### LCR 055/055M-L Insertion Loss in dB measured in a 50Ω system /50 Ω环境下插入损耗

— Common Mode --- Differential Mode



☆ Other specifications, requirements and customizations can be offered upon request. / 其它规格可以根据您的要求定做