

# LCR 0913 / 0913M

High Voltage, Single Stage, Single Phase Filters for the Lighting Industry and High Reliability Applications

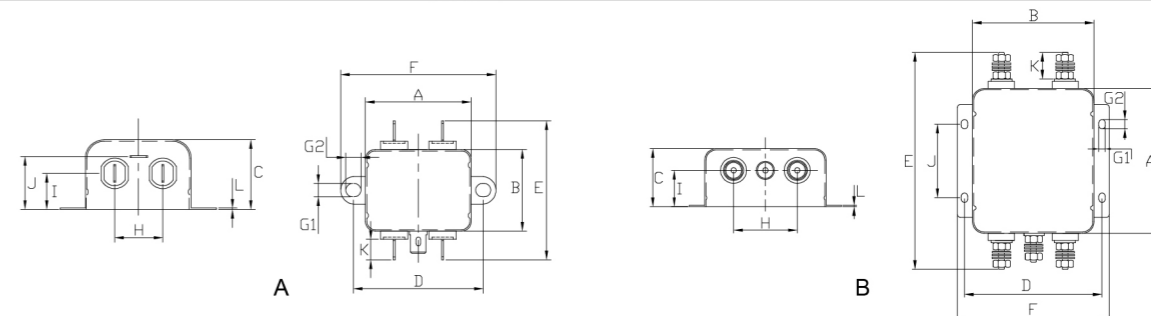
高电压, 单相单极型电源滤波器  
应用于照明和高稳定性设备



| Model No.<br>型号 | Model No.<br>型号 | Rated Current<br>@ 40°C<br>额定电流 | Mechanical<br>Diagram<br>外形图 | Unit Weight<br>单重 (g) | Terminal Options 连接方式 |                      |
|-----------------|-----------------|---------------------------------|------------------------------|-----------------------|-----------------------|----------------------|
|                 |                 |                                 |                              |                       | In 入                  | Out 出                |
| 0913.00101.00   | 0913M.00101.00  | 1 A                             | A                            | 80                    | Faston 6.35*0.8 / M4  | Faston 6.35*0.8 / M4 |
| 0913.00301.00   | 0913M.00301.00  | 3 A                             | A                            | 84                    | Faston 6.35*0.8 / M4  | Faston 6.35*0.8 / M4 |
| 0913.00601.00   | 0913M.00601.00  | 6 A                             | A                            | 88                    | Faston 6.35*0.8 / M4  | Faston 6.35*0.8 / M4 |
| 0913.01001.00   | 0913M.01001.00  | 10 A                            | A                            | 151                   | Faston 6.35*0.8 / M4  | Faston 6.35*0.8 / M4 |
| 0913.01501.00   | 0913M.01501.00  | 15 A                            | A                            | 160                   | Faston 6.35*0.8 / M4  | Faston 6.35*0.8 / M4 |
| 0913.02001.00   | 0913M.02001.00  | 20 A                            | A                            | 160                   | Faston 6.35*0.8 / M4  | Faston 6.35*0.8 / M4 |
| 0913.02501.00   | 0913M.02501.00  | 25 A                            | B                            | 701                   | M4 / M6               | M4 / M6              |
| 0913.03001.00   | 0913M.03001.00  | 30 A                            | B                            | 742                   | M6                    | M6                   |
| 0913.04001.00   | 0913M.04001.00  | 40 A                            | B                            | 759                   | M6                    | M6                   |

Please mark terminals type at the end of the P/N when order or inquiry / 请在订单或询价单上注明端子类型

## LCR 0913 / 0913M Mechanical Outlines 外形图



## LCR 0913 / 0913M Mechanical Dimensions (mm) 外形尺寸

| Model No.     | Model No.      | A   | B  | C  | D  | E     | F   | G          | H  | I  | J    | K    |
|---------------|----------------|-----|----|----|----|-------|-----|------------|----|----|------|------|
| 0913.00101.00 | 0913M.00101.00 | 44  | 33 | 29 | 54 | 56.8  | 64  | 2-Φ5.3*6.3 | 20 | 15 | 2    | 8.5  |
| 0913.00301.00 | 0913M.00301.00 | 44  | 33 | 29 | 54 | 56.8  | 64  | 2-Φ5.3*6.3 | 20 | 15 | 22   | 8.5  |
| 0913.00601.00 | 0913M.00601.00 | 44  | 33 | 29 | 54 | 56.8  | 64  | 2-Φ5.3*6.3 | 20 | 15 | 22   | 8.5  |
| 0913.01001.00 | 0913M.01001.00 | 51  | 52 | 29 | 61 | 75.8  | 71  | 2-Φ5.3*6.3 | 20 | 14 | 22   | 8.5  |
| 0913.01501.00 | 0913M.01501.00 | 51  | 52 | 29 | 61 | 75.8  | 71  | 2-Φ5.3*6.3 | 20 | 14 | 22   | 8.5  |
| 0913.02001.00 | 0913M.02001.00 | 51  | 52 | 29 | 61 | 75.8  | 71  | 2-Φ5.3*6.3 | 20 | 14 | 22   | 8.5  |
| 0913.02501.00 | 0913M.02501.00 | 100 | 84 | 40 | 95 | 150.6 | 105 | 4-Φ4.5*6.5 | 44 | 25 | 50.8 | 20.5 |
| 0913.03001.00 | 0913M.03001.00 | 100 | 84 | 40 | 95 | 150.6 | 105 | 4-Φ4.5*6.5 | 44 | 25 | 50.8 | 20.5 |
| 0913.04001.00 | 0913M.04001.00 | 100 | 84 | 40 | 95 | 150.6 | 105 | 4-Φ4.5*6.5 | 44 | 25 | 50.8 | 20.5 |

所有单位为mm, 1 inch=25.4 mm (All dimensions in mm)

For reference purpose only 仅供参考

## LCR 0913 Series/系列

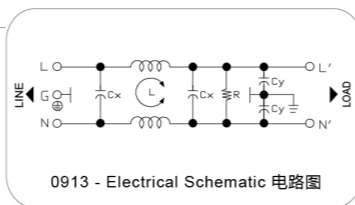
High Voltage, Single Stage, Single Phase Filters  
高电压, 单极, 单相滤波器

### Features/特点

High voltage, single stage, single phase power line filters, available with faston, screws, terminal block or wire exit terminals.  
高电压, 单极, 单相, 通用电源滤波器, 嵌入, 螺栓, 接线连接

### Typical Applications/应用范围

Computers, communication equipment, LCD TV, electrical toys.  
电脑, 通信设备, 液晶电视, 电动玩具



## LCR 0913M Series/系列

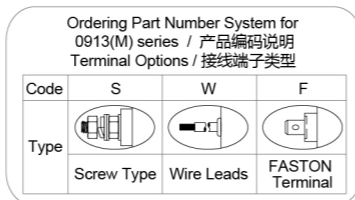
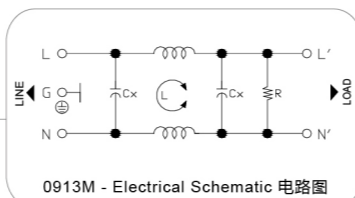
Low leakage current, High Voltage, Single Stage, Single Phase Medical Type Filters  
低漏电流, 高电压, 单极, 单相医疗滤波器

### Features/特点

Low leakage current, high voltage, medical type, single stage, single phase power line filters, available with faston, screws, terminal block or wire exit terminal.  
低漏电流, 高电压, 单极, 医疗型滤波器, 嵌入, 螺栓, 接线连接

### Typical Applications/应用范围

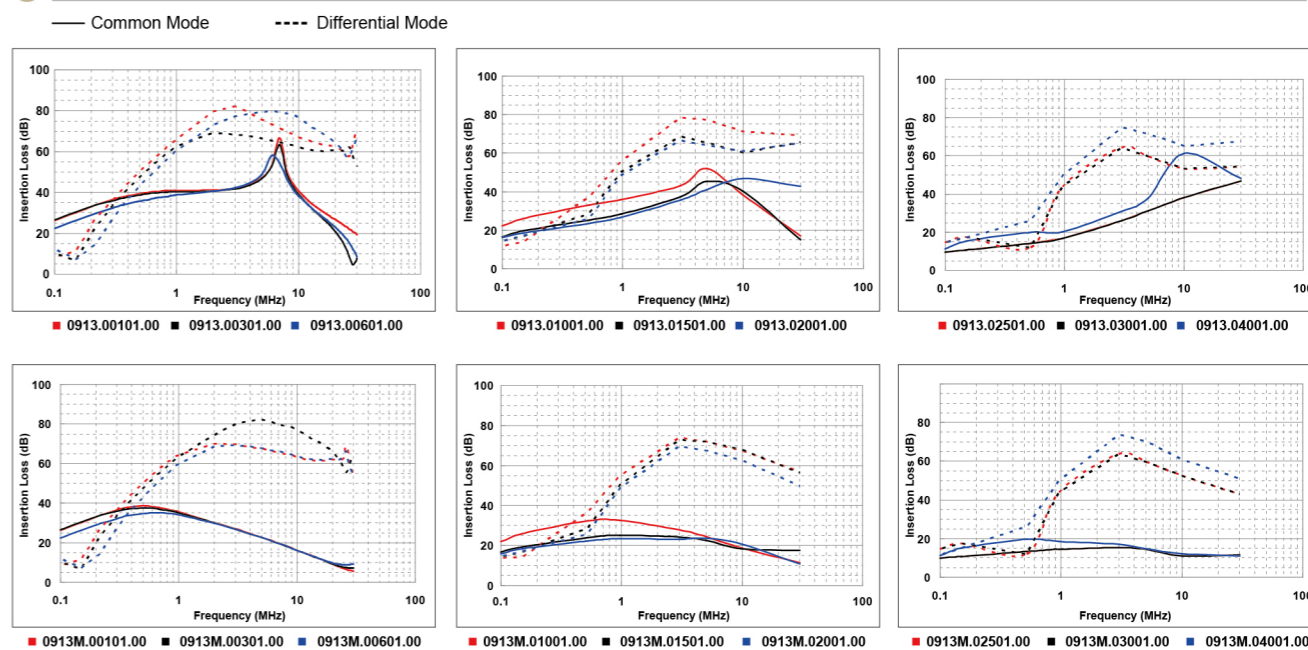
Lighting equipment with very low leakage current requirements and medical applications systems operating at 277VAC and 300VAC.  
低漏电流灯具照明设备, 安全要求下的白色家电, 医疗设备, 运行电压277VAC和300VAC



### Technical Data/技术参数

|                               |                    |  |              |
|-------------------------------|--------------------|--|--------------|
| Rated Voltage Max. (V) 最高额定电压 | 250 VAC            | Leakage Current 0913 Series 0913系列 漏电流   |              |
| Rated Current (A) 额定电流        | 1 - 20A @ 40°C     | @ 300 VAC 60Hz                           | 0.8mA Max.   |
| Operating Frequency (Hz) 工作频率 | 50 / 60Hz          | Leakage Current 0913M Series 0913M系列 漏电流 |              |
| Hipot Rating 高压等级             |                    | @ 300 VAC 60Hz                           | 5μA Max.     |
| (Line to Line线对线)             | 1450V DC           | IP Class 防尘防水等级                          | IP65         |
| (Line to Ground线对地)           | 2250V DC           | Climatic category 气候类别                   | 25 / 85 / 21 |
| Case 外壳                       | Plated Steel       |  |              |
| Packaging Quantity 包装数量       | 224 Pcs per carton |  |              |

## LCR 0913 / 0913M Insertion Loss in dB measured in a 50Ω system 50 Ω环境下插入损耗



☆ Other specifications, requirements and customizations can be offered upon request. / 其它规格可以根据您的要求定做