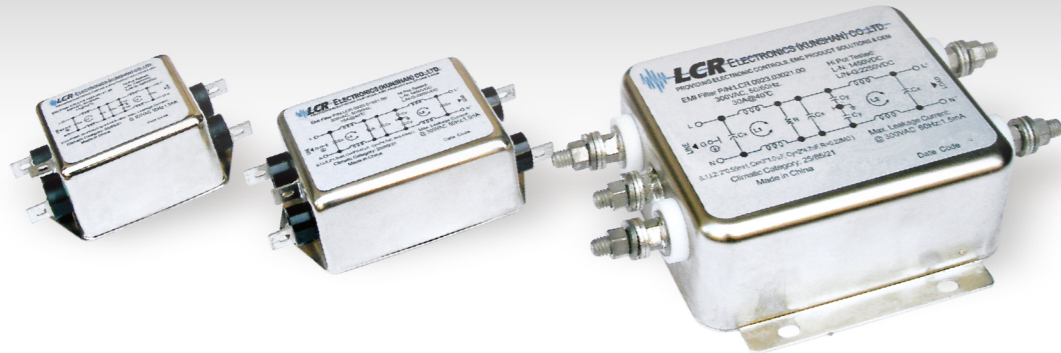
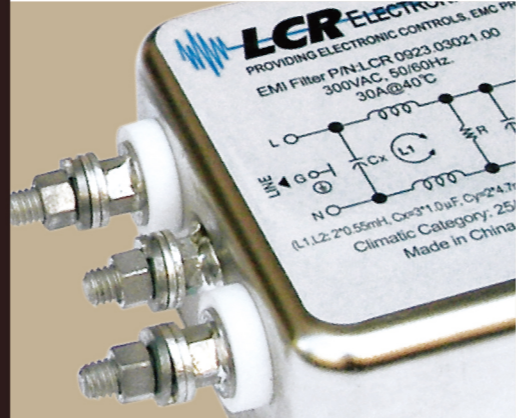


LCR 0923/0923M/21

High Voltage, Double Stage, Single Phase Filters for the Lighting Industry and High Reliability Applications

高电压 (通用, 医疗) 型双极电源滤波器应用于照明和高稳定性设备



LCR 0923/21 Series/系列

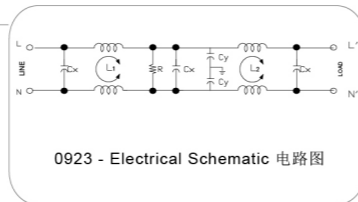
High Voltage, Double stage, Single Phase Filters
高电压, 单相双极滤波器

Features/特点

High voltage, high performances, wide range double stage power line filters, available with faston, screws, terminal block or wire exit terminals.
高电压, 高性能, 应用广泛的双极滤波器, 嵌入, 螺栓, 接线连接

Typical Applications/应用范围

Lighting equipment, medical applications and controls / communication systems operating at 277VAC and 300VAC.
照明设备, 医疗器械, 电源供应和控制系统, 通信系统, 运行电压277VAC和300VAC



LCR 0923M/21 Series/系列

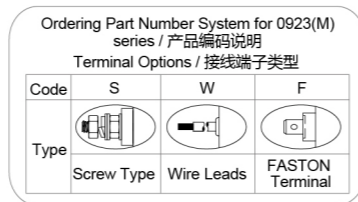
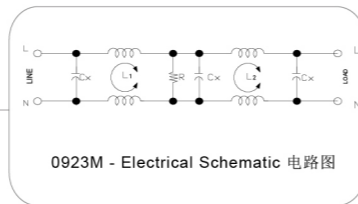
Low Leakage Current, High Voltage, Medical Type, Double Stage, Single Phase Filters
低漏电流, 高电压, 医疗型单相双极滤波器

Features/特点

Low leakage current, high voltage, medical type, double stage, single phase power line filters available with faston, screws, terminal block or wire exit terminal.
低漏电流, 高电压, 医疗型, 单相双极电源滤波器, 嵌入, 螺栓, 接线连接

Typical Applications/应用范围

Lighting equipment with very low leakage current requirements and medical applications systems operating at 277VAC and 300VAC.
低电流照明设备, 医疗设备, 运行电压277VAC和300VAC



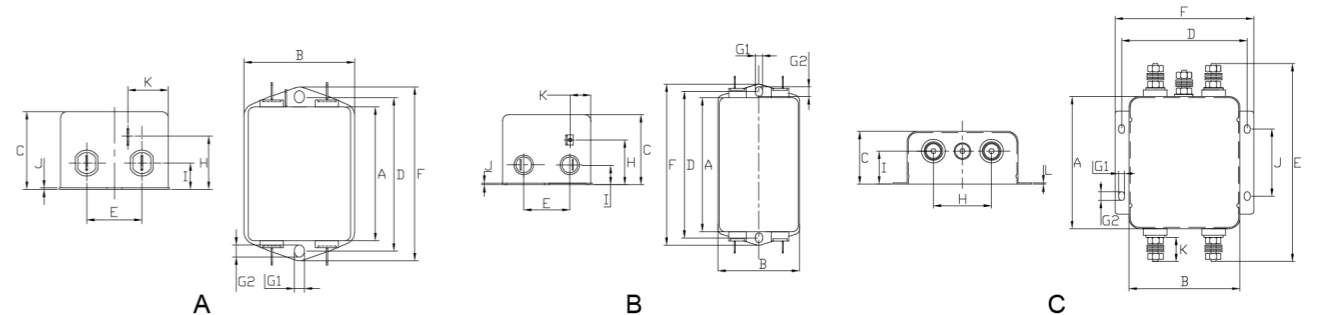
Technical Data/技术参数

Rated Voltage Max. (V) 最高额定电压	300 VAC	Leakage Current 0923 Series 0923系列 漏电流	
Rated Current (A) 额定电流	1 - 30A @ 40°C	@ 300 VAC 60Hz	1.5mA Max.
Operating Frequency (Hz) 工作频率	50 / 60Hz	Leakage Current 0923M Series 0923M系列 漏电流	
Hipot Rating 高压等级		@ 300 VAC 60Hz	5µA Max.
(Line to Line 线对线)	1450V DC	IP Class 防尘防水等级	IP65
(Line to Ground 线对地)	2250V DC	Climatic category 气候类别 (EN60068-1)	25 / 85 / 21
Case 外壳	Plated Steel		
Packaging Quantity 包装数量	60 / 45 Pcs per carton		

Model No. 型号	Model No. 型号	Rated Current @ 40°C 额定电流	Mechanical Diagram 外形图	Unit Weight 单重 (g)	Terminal Options 连接方式	
					In 入	Out 出
0923.00121.00	0923M.00121.00	1 A	A	152	Faston 6.35*0.8 / M4	Faston 6.35*0.8 / M4
0923.00321.00	0923M.00321.00	3 A	A	152	Faston 6.35*0.8 / M4	Faston 6.35*0.8 / M4
0923.00721.00	0923M.00721.00	7 A	A	152	Faston 6.35*0.8 / M4	Faston 6.35*0.8 / M4
0923.01021.00	0923M.01021.00	10 A	A	215	Faston 6.35*0.8 / M4	Faston 6.35*0.8 / M4
0923.01521.00	0923M.01521.00	15 A	A	225	Faston 6.35*0.8 / M4	Faston 6.35*0.8 / M4
0923.02021.00	0923M.02021.00	20 A	B	335	Faston 6.35*0.8 / M4	Faston 6.35*0.8 / M4
0923.03021.00	0923M.03021.00	30 A	C	850	M4 / M6	M4 / M6

Please mark terminals type at the end of the P/N when order or inquiry /请在订单或询价单上注明端子类型

LCR 0923/0923M/21 Mechanical Outlines/外形图



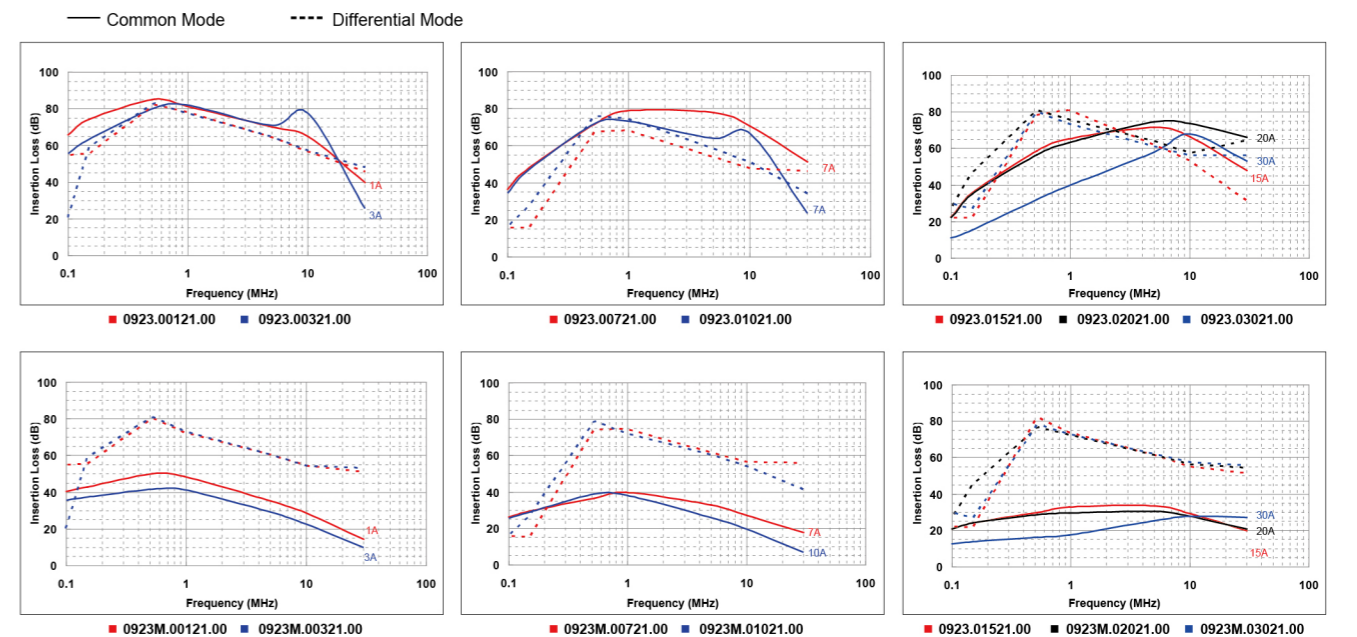
LCR 0923/0923M/21 Mechanical Dimensions (mm)/外形尺寸

Model No.	Model No.	A	B	C	D	E	F	G	H	I	J	K
0923.00121.00	0923M.00121.00	51.7	47.5	30.3	62	21	71	5.3*6.3	19.3	12.3	0.6	20.5
0923.00321.00	0923M.00321.00	51.7	47.5	30.3	62	21	71	5.3*6.3	19.3	12.3	0.6	20.5
0923.00721.00	0923M.00721.00	51.7	47.5	30.3	62	21	71	5.3*6.3	19.3	12.3	0.6	20.5
0923.01021.00	0923M.01021.00	65.5	55	30	75	27	85	5.3*6.3	19.5	12.3	0.6	21.5
0923.01521.00	0923M.01521.00	63.2	52	38	75	25	85	2*4.8	27.5	12.3	0.6	13.5
0923.02021.00	0923M.02021.00	92.5	58	41	105	30	115	5*6.8	29	13	0.8	13.5
0923.03021.00	0923M.03021.00	100	84	57	95	150.6	105	4.5*6.5	44	37	50.8	20.5

所有单位为mm, 1 inch=25.4 mm (All dimensions in mm)

For reference purpose only 仅供参考

LCR 0923/0923M/21 Insertion Loss in dB measured in a 50Ω system /50 Ω环境下插入损耗



☆ Other specifications, requirements and customizations can be offered upon request. / 其它规格可以根据您的要求定做