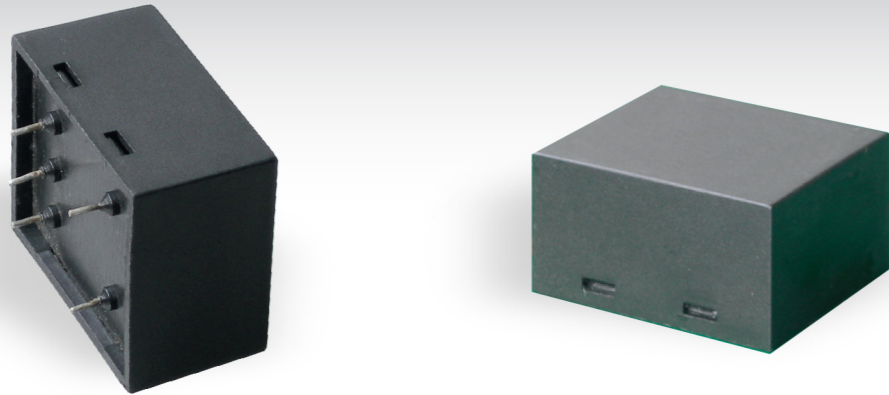


# LCR 094 / 094M

General Purpose and Low Leakage Current  
Filters for PCB Assembly  
PCB装配通用及低漏电流电源滤波器

RoHS



## LCR 094 Series/系列

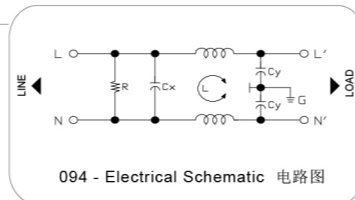
General Purpose Filters for PCB Assembly  
PCB装配通用电源滤波器

### Features/特点

Small, compact through hole, PCBA line filters save on assembly time.  
小巧, 插件式, PCB组装滤波器, 节省组装时间

### Typical Applications/应用范围

PCB assembly for power supply, general PCBA assembly.  
电源分配系统中的PCB组装, 一般的PCB组装



## LCR 094M Series/系列

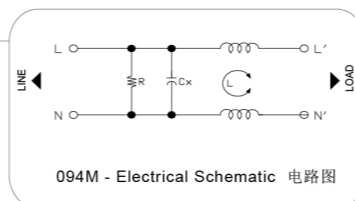
Low Leakage Current Filters for PCB Assembly  
PCB装配用低漏电流滤波器

### Features/特点

Low leakage current, small, compact through hole PCBA line filters - save on assembly time.  
低漏电流, 小巧, 插件式, 用于PCB组装, 节省组装时间

### Typical Applications/应用范围

PCB assembly for medical systems and power supply, general PCBA assembly.  
医疗系统和电源分配系统的PCB组装, 一般PCB组装



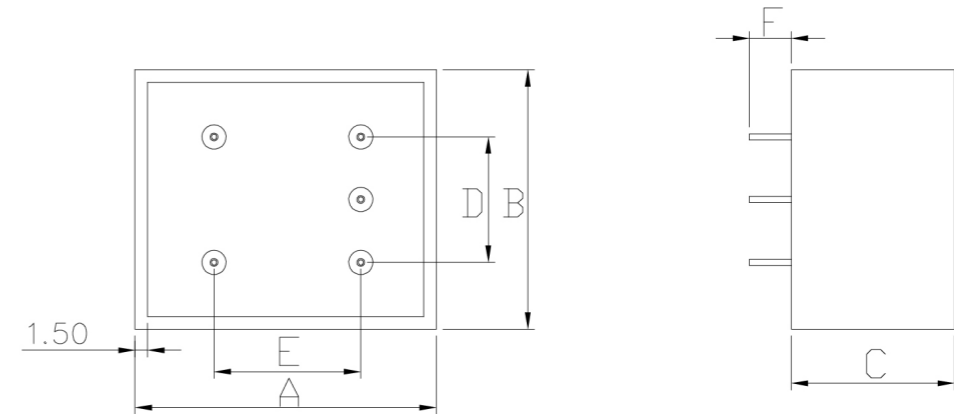
### Technical Data/技术参数

Rated Voltage Max. (V) 最高额定电压	250 VAC	Leakage Current 094 Series 094系列 漏电流	
Rated Current (A) 额定电流	1 - 3A @ 40°C	@250 VAC 50Hz	0.42 mA Max.
Operating Frequency (Hz) 工作频率	50 / 60Hz	@115 VAC 60Hz	0.23 mA Max.
Hipot Rating 高压等级		Leakage Current 094M Series 094M系列 漏电流	
(Line to Line 线对线)	1450V DC	@250 VAC 50Hz	10µA Max.
(Line to Ground 线对地)	2250V DC	@115 VAC 60Hz	5µA Max.
Case 外壳	PBT Resin	IP Class 防尘防水等级	IP54
Packaging Quantity 包装数量	250 Pcs per carton	Climatic category 气候类别 (EN60068-1)	25 / 85 / 21

Model No. 型号	Model No. 型号	Rated Current @ 40°C 额定电流	Rated Voltage 额定电压	Unit Weight 单重 (g)	Terminal Options 连接方式	
					In 入	Out 出
094.00101.00	094M.00101.00	1 A	250VAC	50	Tinned wire Φ0.8	Tinned wire Φ0.8
094.00201.00	094M.00201.00	2 A	250VAC	50	Tinned wire Φ0.8	Tinned wire Φ0.8
094.00301.00	094M.00301.00	3 A	250VAC	50	Tinned wire Φ0.8	Tinned wire Φ0.8

Please mark terminals type at the end of the P/N when order or inquiry /请在订单或询价单上注明端子类型

### LCR 094/094M Mechanical Outlines/外形图



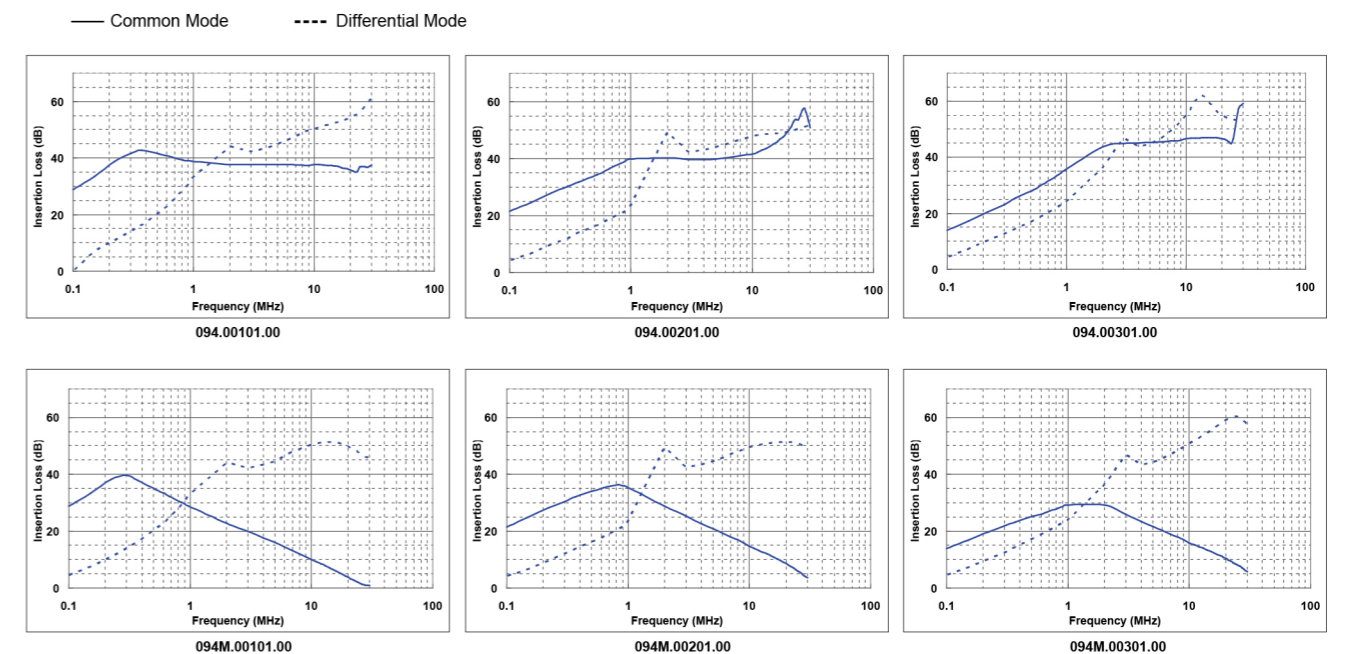
### LCR 094/094M Mechanical Dimensions (mm)/外形尺寸

Model No.	Model No.	A	B	C	D	E	F
094.00101.00	094M.00101.00	36	31	19.5	15	17.5	5
094.00201.00	094M.00201.00	36	31	19.5	15	17.5	5
094.00301.00	094M.00301.00	36	31	19.5	15	17.5	5

所有单位为mm, 1 inch=25.4 mm (All dimensions in mm)

For reference purpose only 仅供参考

### LCR 094/094M Insertion Loss in dB measured in a 50Ω system /50 Ω环境下插入损耗



☆ Other specifications, requirements and customizations can be offered upon request. /其它规格可以根据您的要求定做