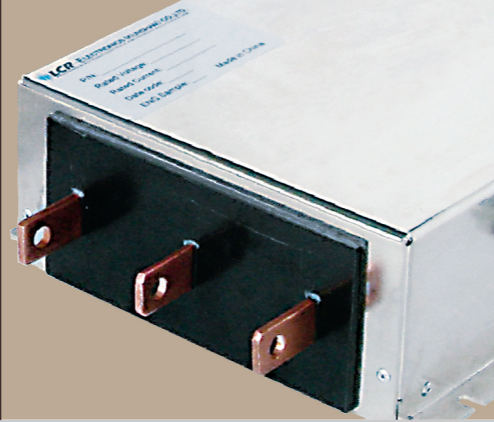


# LCR 097

High Performance Three Phase Double Stage Filters  
高性能三相双极电源滤波器

RoHS (Up to 100A)



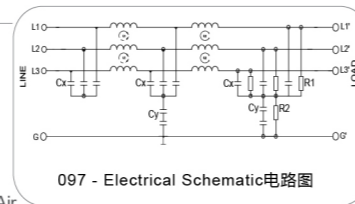
## LCR 097 Series/系列

### Features/特点

High performance, compact, robust, general purpose three phase power line filters, meet UL certificate  
高性能, 紧凑, 功能完善, 通用三相电源滤波器, 满足UL安规认证

### Typical Applications/应用范围

CNC Machines, Injection Molding Machines, Power Grids, Solar and Wind Inverters, Power Stations, Facility Air Condition System, elevators, escalators, frequency inverters based controls and Industrial equipments  
数控机床, 注塑成型机, 电力电网, 太阳能和风能交换机, 电站, 空气净化设施, 电梯, 扶梯, 带变频器的控制系统和工业设备等。



Multi-terminal options  
多种接线端子选择

Code	S	W	T	B	R	F
Type						
	Screw Type	Wire Leads	Terminal Block	Barrier Terminal	Bus Bar	FASTON Terminal

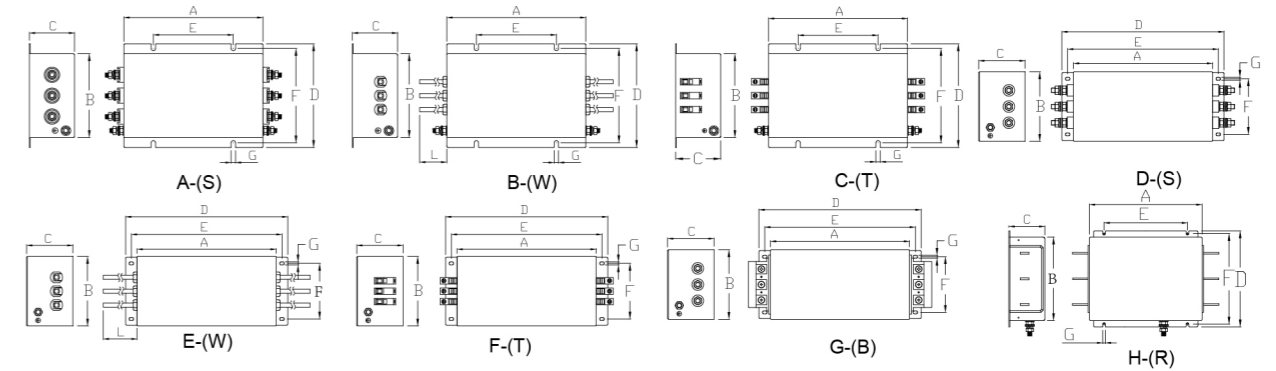
### Technical Data/技术参数

Rating Voltage Max. 最高额定电压(V)	520(690) VAC	Leakage Current 漏电流	
Rated Current 额定电流(A)	10A-100A @ 50°C	@ 250 VAC 50Hz	20mA
Operating Frequency 频率(Hz)	50/60 Hz	IP Class 防尘防水等级	IP42-54
Over Load (% of Rated Current)	150% x 1 min. / hr.	Climatic category 气候类别 (EN-60068-1)	25/100/21
Hipot Rating 高压等级	400% x 1 sec. / hr.	Case 外壳	Plated steel/Aluminum sheet
Line to Line 线对线	1450 VDC		
Line to Ground 线对地	2250 VDC		

097 Model No. 型号	Rated Current @ 50°C 额定电流	RRated Voltage 额定电压	Mechanical Diagram 外形图	Terminal Options 连接方式	
				In 入	Out 出
097.01001.00	10 A	520(690)VAC	A/B/C/D/E/F	S (M4)/W/T/B	S (M4)/W/T/B
097.02501.00	25 A	520(690)VAC	A/B/C/D/E/F	S (M4)/W/T/B	S (M4)/W/T/B
097.03001.00	30 A	520(690)VAC	A/B/C/D/E/F	S (M6)/W/T/B	S (M6)/W/T/B
097.04001.00	40 A	520(690)VAC	A/B/C/D/E/F	S (M6)/W/T/B	S (M6)/W/T/B
097.05001.00	50 A	520(690)VAC	D/E/F/G	S (M6)/W/T/B	S (M6)/W/T/B
097.08001.00	80 A	520(690)VAC	D/E/F/G	S (M10)/W/T/B	S (M10)/W/T/B
097.10001.00	100 A	520(690)VAC	D/E/F/G	S (M10)/W/T/B	S (M10)/W/T/B
097.12501.00	125 A	520(690)VAC	D/E/F/G	S (M10)/W/T/B	S (M10)/W/T/B
097.15001.00	150 A	520(690)VAC	D/E/F/G	S (M10)/W/T/B	S (M10)/W/T/B
097.20001.00	180 A	520(690)VAC	D/E/F/G	S (M12)/W/T/B	S (M12)/W/T/B
097.25001.00	250 A	520(690)VAC	H	R (20*3 Busbar with 10.5 hole)	R (20*3 Busbar with 10.5 hole)
097.30001.00	300 A	520(690)VAC	H	R (20*4 Busbar with 2*10.5 hole)	R (20*4 Busbar with 2*10.5 hole)

Please mark terminals type at the end of the P/N when order or inquiry /请在订单或询价单上注明端子类型

### LCR 097 Mechanical Outlines/外形图



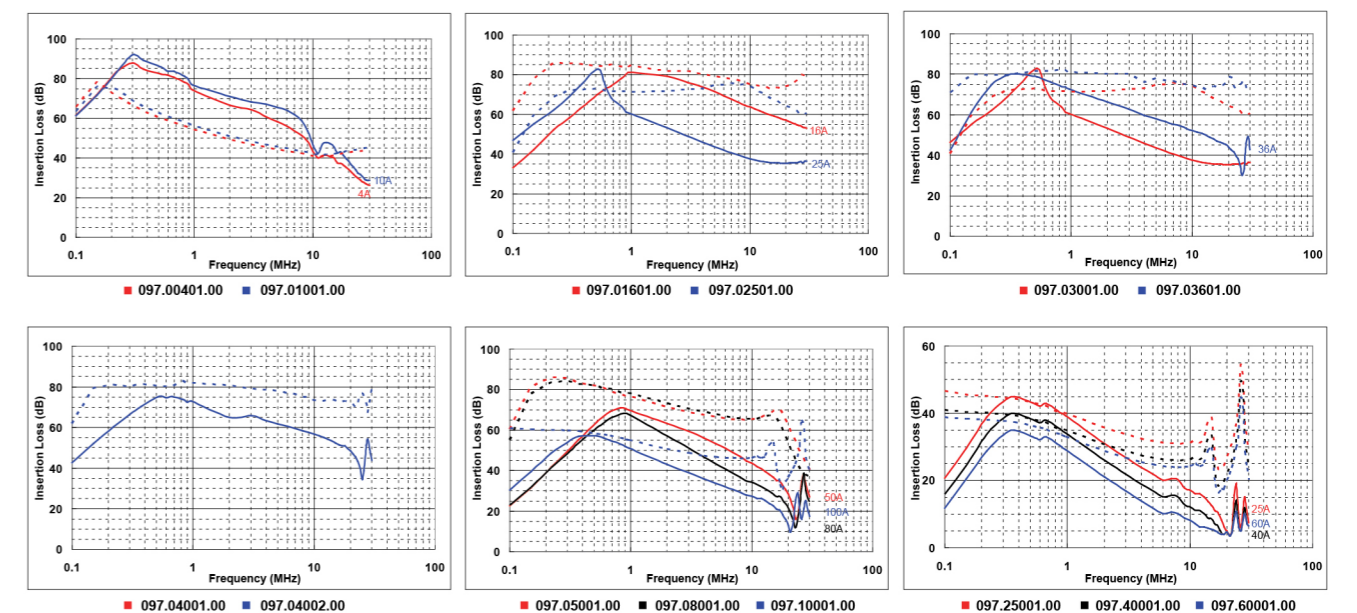
### LCR 097 Mechanical Dimensions (mm)/外形尺寸

Model No.	A	B	C	D	E	F	G	Mechanical Diagram 外形图
097.01001.00	200	120	65	149.1	115	135.9	6.5	A/B/C
				240	220	90	6.5*10	E/F/G
097.02501.00	200	120	65	149.1	115	135.9	6.5	A/B/C
				240	220	90	6.5*10	E/F/G
097.03001.00	200	120	65	149.1	115	135.9	6.5	A/B/C
				240	220	90	6.5*10	E/F/G
097.04001.00	200	120	65	149.1	115	135.9	6.5	A/B/C
				240	220	90	6.5*10	E/F/G
097.05001.00	240	120	100	280	265	90	6.5*10	
097.08001.00	300	150	100	350	325	120	6.5*10	
097.10001.00	300	150	100	350	325	120	6.5*10	
097.12501.00	350	170	120	400	375	140	6.5*10	
097.15001.00	350	170	120	400	375	140	6.5*10	
097.20001.00	250	190	160	300	273	149.5	6.5*10	
097.25001.00	300	200	90	240	200	220	6.5*10	
097.30001.00	300	200	110	240	200	220	6.5*10	

所有单位为mm, 1 inch=25.4 mm (All dimensions in mm)

For reference purpose only 仅供参考

### LCR 097 Insertion Loss in dB measured in a 50Ω system /50 Ω环境下插入损耗



☆ Other specifications, requirements and customizations can be offered upon request. /其它规格可以根据您的要求定做